

China Spring I.S.D.

District Dyslexia Plan



2010-2011

## **Table of Contents**

I.	Definition of Dyslexia	3
II.	Procedures Required by State Law Prior to Formal Assessment	3
III.	Referral Process	4
IV.	Assessment of Dyslexia	6
V.	Identification of Students with Dyslexia	7
VI.	Program Description and Options	10
VII.	Timeline	12
VIII.	Student Monitoring and Program Exit Criteria	12

## **I. Definition of Dyslexia**

As defined in Texas Education Code §38.003

- (1) “*Dyslexia*” means a disorder of constitutional origin manifested by a difficulty in learning to read, write, or spell, despite conventional instruction, adequate intelligence, and sociocultural opportunity.
- (2) “*Related disorders*” includes disorders similar to or related to dyslexia such as developmental auditory imperception, dysphasia, specific developmental dyslexia, developmental dysgraphia, and developmental spelling disability.

The definition of the International Dyslexia Association states:

*Dyslexia is a specific learning disability that is neurological in origin. It is characterized by difficulties with accurate and/or fluent word recognition and by poor spelling and decoding abilities. These difficulties typically result from a deficit in the phonological component of language that is often unexpected in relation to other cognitive abilities and the provision of effective classroom instruction. Secondary consequences may include problems in reading comprehension and reduced reading experience that can impede growth of vocabulary and background knowledge.*  
(Adopted by the International Dyslexia Board of Directors, November 12, 2002).

The primary difficulties of a student identified as having dyslexia occur in phonemic awareness and manipulation, single-word decoding, reading fluency, and spelling. Secondary consequences of dyslexia may include difficulties in reading comprehension and/or written expression. These difficulties are unexpected for the student’s age, educational level, or cognitive abilities. Additionally, there is often a **family history** of similar difficulties.

## **II. Procedures Required by State Law Prior to Formal Assessment**

In accordance with TEC §28.006, China Spring ISD administers early reading instruments in kindergarten, first, and second grades to determine students’ reading development and comprehension. If, on the basis of the reading instrument results, students are determined to be at risk for dyslexia and other reading difficulties, the students’ parents/guardians are notified. In addition, an accelerated (intensive) reading program that appropriately addresses students’ reading difficulties and enables them to “catch up” with their typically performing peers is implemented. Should students continue to struggle with reading, writing, and spelling during the intensive reading

instruction, then China Spring ISD will initiate procedures to recommend these students for assessment for dyslexia. The information from the early reading instruments will be one source of information in deciding whether or not to recommend a student for assessment for dyslexia. Other sources may include, but are not limited to: performance on state mandated test(s), a student's grades/performance in reading and written spelling, and teachers' observations of the characteristics of dyslexia.

### **III. Referral Process**

At any time that a student continues to struggle with one or more components of reading, China Spring ISD will collect additional information about the student.

#### **Data Gathering:**

Information will be used to evaluate the student's academic progress and determine what actions are needed to ensure the student's improved academic performance. This information **should** include data that demonstrates the student was provided appropriate instruction and data-based documentation of repeated assessments of achievement at reasonable intervals (progress monitoring), reflecting formal assessment of student progress during instruction. Additional information to be considered includes the results from some or all of the following:

- Vision screening
- Hearing screening
- Teacher reports of classroom concerns
- Basal reading series assessment
- Accommodations provided by classroom teachers
- Academic progress reports and/or report cards
- Samples of school work
- Parent conferences
- Testing for limited English proficiency
- Speech and language screening through a referral process
- The K-2 reading instrument as described in TEC §28.006
- State student assessment program as described in TEC §39.002

Data that support the student received conventional (appropriate) instruction and that the difficulties are not primarily the result of sociocultural factors which include language differences, irregular attendance, or lack of experiential background.

Among the actions that China Spring ISD has available for the student is a recommendation that the student be assessed for dyslexia. China Spring ISD recommends assessment for dyslexia if the student demonstrates the following:

- Poor performance in one or more areas of reading and/or the related area of spelling that is unexpected for the student's age/grade, and;

- Characteristics of dyslexia.

### **Primary Reading/Spelling Characteristics of Dyslexia:**

- Difficulty reading real words in isolation
- Difficulty accurately decoding nonsense words
- Slow, inaccurate, or labored oral reading (lack of reading fluency)
- Difficulty with learning to spell

The reading/spelling characteristics are the result of difficulty with the following:

- The development of phonological awareness, including segmenting, blending, and manipulating sounds in words
- Learning the names of letters and their associated sounds
- Phonological memory (holding information about sounds and words in memory)
- Rapid naming of familiar objects, colors, or letters of the alphabet

Secondary consequences of dyslexia may include the following:

- Variable difficulty with aspects of reading comprehension
- Variable difficulty with aspects of written composition
- A limited amount of time spent in reading activities

The Student Assistance Team will evaluate the collected data and make a recommendation for further assessment when these criteria are met.

## **IV. Assessment for Dyslexia**

Students enrolling in China Spring ISD shall be assessed for dyslexia and related disorders at appropriate times (TEC §38.003(a)). The appropriate time depends upon multiple factors including the student's reading performance, reading difficulties, poor response to supplemental, scientifically based reading instruction, teachers' input, and parents' or guardians' input. Additionally, the appropriate time for assessing is early in a student's school career (19 TAC §74.28), the earlier the better. While earlier is better, students will be recommended for assessment for dyslexia even if the reading difficulties appear later in a student's school career.

The procedures followed for assessment include:

1. Notify parents or guardians of proposal to assess student for dyslexia
2. Inform parents or guardians of their rights under §504
3. Obtain parent or guardian permission to assess the student for dyslexia
4. Assess student, being sure that individuals/professionals who administer assessments have training in the evaluation of students for dyslexia and related disorders (19 TAC §74.28).

Tests, assessments, and other evaluation materials will (§504):

- Be validated for the specific purpose for which they are used
- Include material tailored to assess specific areas of educational need and not merely materials that are designed to provide a single general intelligence quotient
- Be selected and administered so as to ensure that, when a test is given to a student with impaired sensory, manual, or speaking skills, the test results accurately reflect the student's aptitude or achievement level, or whatever other factor the test purports to measure, rather than reflecting the student's impaired sensory, manual, or speaking skills
- Include multiple measures of a student's reading abilities such as informal assessment information (e.g., anecdotal records, lists of books the student has read, audio recordings of the student's oral reading)
- Be administered by trained personnel and in conformance with the instructions provided by the producer of the evaluation materials

### **Domains to Assess**

China Spring ISD administers measures that are related to the student's educational needs. Depending upon the student's age and stage of reading development, the following are the areas related to reading that should be assessed:

- Reading real and nonsense words in isolation (decoding)
- Phonological awareness
- Letter knowledge (name and associated sound)
- Rapid naming
- Reading fluency (rate and accuracy)
- Reading comprehension
- Written spelling

Based on the student's academic difficulties and characteristics, additional areas that can be assessed include vocabulary, written expression, handwriting, and mathematics.

**English Language Learners (This refers to students served in Bilingual and ESL programs as well as students designated Limited English Proficient (LEP) whose parents have denied services.)**

Much diversity exists among English Language Learners (ELLs). The identification and service delivery process for dyslexia must be in step with the student's linguistic environment and educational background. In China Spring ISD, the LPAC (Language Proficiency Assessment Committee) will be involved in the decision making process.

Additional data to be gathered when assessing English Language Learners:

- Language Proficiency Assessment Committee (LPAC) documentation which includes the following:
  - Home language survey
  - Assessment related to identification for limited English proficiency (oral language proficiency tests and norm-referenced tests)
  - TAKS documentation when available
  - Texas English Language Proficiency system (TELPAS) information (Reading Proficiency Test in English (RPTE) and Texas Observation Protocol (TOP)).
  - Type of language programming provided and language of instruction
  - Linguistic environment and second-language acquisition development
  - Previous schooling in and outside of the United States.

Additional assessment when assessing English Language Learners:

- Comprehensive oral language proficiency testing should be completed in English and the student's native language whenever possible
- If the student has received academic instruction in his/her native language, as well as English, then the "Domains to Assess" need to be completed in both languages to the appropriate extent.

Interpretation:

Test results of English Language Learners will be interpreted in light of the student's: language development (in both English and the student's native language), educational history, linguistic background, socioeconomic issues, and any other pertinent factors that affect learning.

## **V. Identification of Students with Dyslexia**

A team or committee of knowledgeable persons determines whether the student has dyslexia. The team must be knowledgeable about:

- The student being assessed
- The reading process
- Dyslexia and related disorders
- Dyslexia instruction
- District or charter school, state, and federal guidelines for assessment
- The assessments used
- The meaning of the collected data

This committee determines the identification of dyslexia after reviewing all accumulated data including the following areas:

- The observations of the teacher, district or charter school staff, and/or parent/guardian
- Data gathered from the classroom (including student work and the results of classroom measures) and information found in the student's cumulative folder (including the developmental and academic history of the student)
- Data-based documentation of student progress during instruction/intervention
- Language Assessment Proficiency Committee (LPAC) documentation, when applicable
- The results of administered assessments
- All other accumulated data regarding the development of the student's learning and his/her educational needs

**Committee Decision Points for Dyslexia Identification:**

1. The student's difficulties in the area of reading will reflect one or more of the primary characteristics of dyslexia with **unexpectedly** low performance for the student's age and educational level in the following areas:

- Reading real words in isolation
- Decoding nonsense words
- Reading fluency (both rate and accuracy)
- Written spelling (an isolated difficulty in spelling would not be sufficient to identify dyslexia)

2. The **unexpectedly** low reading performance will be the result of a deficit in phonological processing, including the following:

- Phonological awareness
- Rapid naming
- Phonological memory

3. There should be documented evidence of unexpectedness: Unexpectedness is considered in relation to the student's other cognitive abilities, age, or educational level. This may include an average ability to learn in the absence of print or in other academic areas.

Many students with dyslexia will have difficulty with the secondary characteristics of dyslexia, including reading comprehension and written composition.

The committee of knowledgeable persons will also incorporate the following guidelines from TEC §38.003 and 19 TAC §74.28:

- The student has received conventional (appropriate) instruction

- The student has an unexpected lack of appropriate academic progress (in the areas of reading and spelling)
- The student has adequate intelligence (an average ability to learn in the absence of print or in other academic areas)
- The student exhibits characteristics associated with dyslexia
- The student's lack of progress is not due to sociocultural factors such as language differences, irregular attendance, or lack of experiential background.

If the committee determines that the student has dyslexia, the committee of knowledgeable persons also determines whether the student has a disability under the Rehabilitation Act of 1973, §504. Not all students with dyslexia are automatically eligible for §504. A student is considered to have a disability under §504 if the condition substantially limits the student's learning. Students with additional factors that complicate their dyslexia may require additional support or referral to special education. (See Flow Chart)

At any time during the assessment for dyslexia, identification process, or instruction related to dyslexia, students may be referred for evaluation for special education. At times, students will display additional factors/areas complicating their dyslexia and requiring more support than what is available through dyslexia instruction. At other times, students with severe dyslexia or related disorders will be unable to make adequate academic progress within any of the programs for dyslexia or related disorders. In such cases, a referral to special education for evaluation and possible identification as a child with a disability within the Individuals with Disabilities Improvement Act of 2004 (IDEIA) will be made as needed.

### **Assessment of Special Education Students**

If a student is already in special education, but exhibits the characteristics of dyslexia or related disorders and is referred for assessment, assessment procedures for students under the Individuals with Disabilities Act (IDEIA 2004) will be followed. Assessment data from prior special education assessments may be utilized, and/or additional assessment may be conducted by personnel trained in assessment to evaluate students for dyslexia and related disorders. In this case, the ARD committee will serve as the committee of knowledgeable persons.

### **Assessment of Students Identified Outside the District**

Students identified as having dyslexia or related disorders from an outside source will be evaluated for eligibility in the district's program. China Spring ISD may choose to accept the outside assessment, or may re-assess the student. In either situation, the committee of knowledgeable persons will determine the identification status of a

student enrolled in China Spring ISD, and the placement of the student in the dyslexia program(s).

## **VI. Program Description & Options**

Once it has been determined that a student has dyslexia, China Spring ISD shall provide an appropriate instructional program for the student (TEC §38.003). The following procedures will be followed:

- Instructional decisions for a student with dyslexia are made by a team that is knowledgeable about the student, the meaning of the evaluation information, and instructional components and approaches for students with dyslexia.
- China Spring ISD shall purchase a reading program or develop their own reading program for students with dyslexia and related disorders as long as the program is characterized by the descriptors found in the state dyslexia handbook 2007 (see Components of Instruction).
- China Spring ISD will provide each identified student access at his/her campus to the services of a teacher trained in dyslexia and related disorders. The district may, with the approval of each student's parents or guardians, offer additional services at a centralized location. Such centralized services shall not preclude each student from receiving services at his or her campus (19 TAC§ 74.28).
- Parents/guardians of students eligible under the Rehabilitation Act of 1973, §504, will be informed of all services and options available to the student under that federal statute.
- Teachers who provide the appropriate instruction for students with dyslexia will be trained in the professional development activities specified by the district and/or campus decision making committee. As stated in 19 TAC, §74.28, the teachers who provide appropriate instruction for students with dyslexia must be trained and be prepared to implement instructional strategies that utilize individualized, intensive, multisensory, phonetic methods and a variety of writing and spelling components. They may serve as trainers and consultants in the area of dyslexia and related disorders to regular, remedial, and special education teachers.

China Spring ISD will provide a parent education program for the parents/guardians of students with dyslexia and related disorders. The program will include:

- Characteristics of dyslexia and related disorders
- Information on assessment and diagnosis of dyslexia
- Information on effective strategies for teaching students with dyslexia
- Awareness of information on classroom modifications and especially of modifications allowed on standardized testing (19 TAC §74.28)

## Components of Instruction

The instructional program will be offered in a small class setting and include reading, writing, and spelling as appropriate. The major instructional strategies will utilize individualized, intensive, and multisensory methods as appropriate. Components of instruction, as appropriate for the reading needs of the student, include:

- Phonemic awareness instruction that enables students to detect, segment, blend, and manipulate sounds in spoken language
- Graphophonemic knowledge (phonics) instruction that takes advantage of the letter-sound plan in which words that carry meaning are made of sounds and sounds are written with letters in the right order. Students with this understanding can blend sounds associated with letters into words and can separate words into component sounds for spelling and writing
- Language structure instruction that encompasses morphology (the study of meaningful units of language such as prefixes, suffixes, and roots), semantics (ways that language conveys meaning), syntax (sentence structure), and pragmatics (how to use language in a particular context)
- Linguistic instruction directed toward proficiency and fluency with patterns of language so that words and sentences are carriers of meaning
- Strategy-oriented instruction in the strategies students use for decoding, encoding, word recognition, fluency, and comprehension that students need to become independent readers

Instructional approaches, as appropriate to meet the instructional needs of the student, include:

- Explicit, direct instruction that is systematic (structured), sequential, and cumulative. Instruction is organized and presented in a way that follows a logical sequential plan, fits the nature of language (alphabetic principle) with no assumption of prior skills or language knowledge, and maximizes student engagement. This instruction proceeds at a rate commensurate with students' needs, ability levels, and demonstration of progress
- Individualized instruction that meets the specific learning needs of each individual student in a small group setting; a reading curriculum that matches each student's individual ability level and contains all of the *Components of Instruction* mandated in 19 TAC §74.28
- Intensive, highly concentrated instruction that maximizes student engagement, uses specialized methods and materials, produces results, and contains all the components of instruction mandated in 19 TAC §74.28
- Meaning-based instruction that is directed toward purposeful reading and writing, with an emphasis on comprehension and composition

- Multisensory instruction that incorporates the simultaneous use of two or more sensory pathways (auditory, visual, kinesthetic, tactile) during teacher presentations and student practice

## **VII. Timeline**

The following timeline applies to students in regular education programs, or who may qualify as §504:

- Upon receipt of parent permission to assess until assessment is completed shall be 30 school days or less.
- From the completion of the assessment to the committee of knowledgeable persons meeting for determination of dyslexia and program placement shall be within two weeks.

Special education students shall follow the timelines required by federal law, under IDEA 2004.

## **VIII. Student Monitoring and Program Exit Criteria**

Upon successful completion of the district dyslexia program(s), as measured by program mastery checks (assessments) completed at regular intervals, students will be exited from the district dyslexia program(s). Additional criteria for exit may include but is not limited to: grades from progress reports or report cards, state assessment data, benchmarks, progress monitoring data, teacher and/or parent observations/checklists, and individual dyslexia program requirements.

Students that have completed the China Spring ISD dyslexia program will receive regular monitoring during the first year.

Monitoring may include, but is not limited to the collection/evaluation of:

- progress reports
- report cards
- state assessment data
- teacher reports/checklists
- parent reports/checklists
- counselor reports
- other program reports
- additional assessment data

Students qualifying for dyslexia services that are identified as §504 or Special Education will follow monitoring/re-evaluation requirements outlined in federal law.

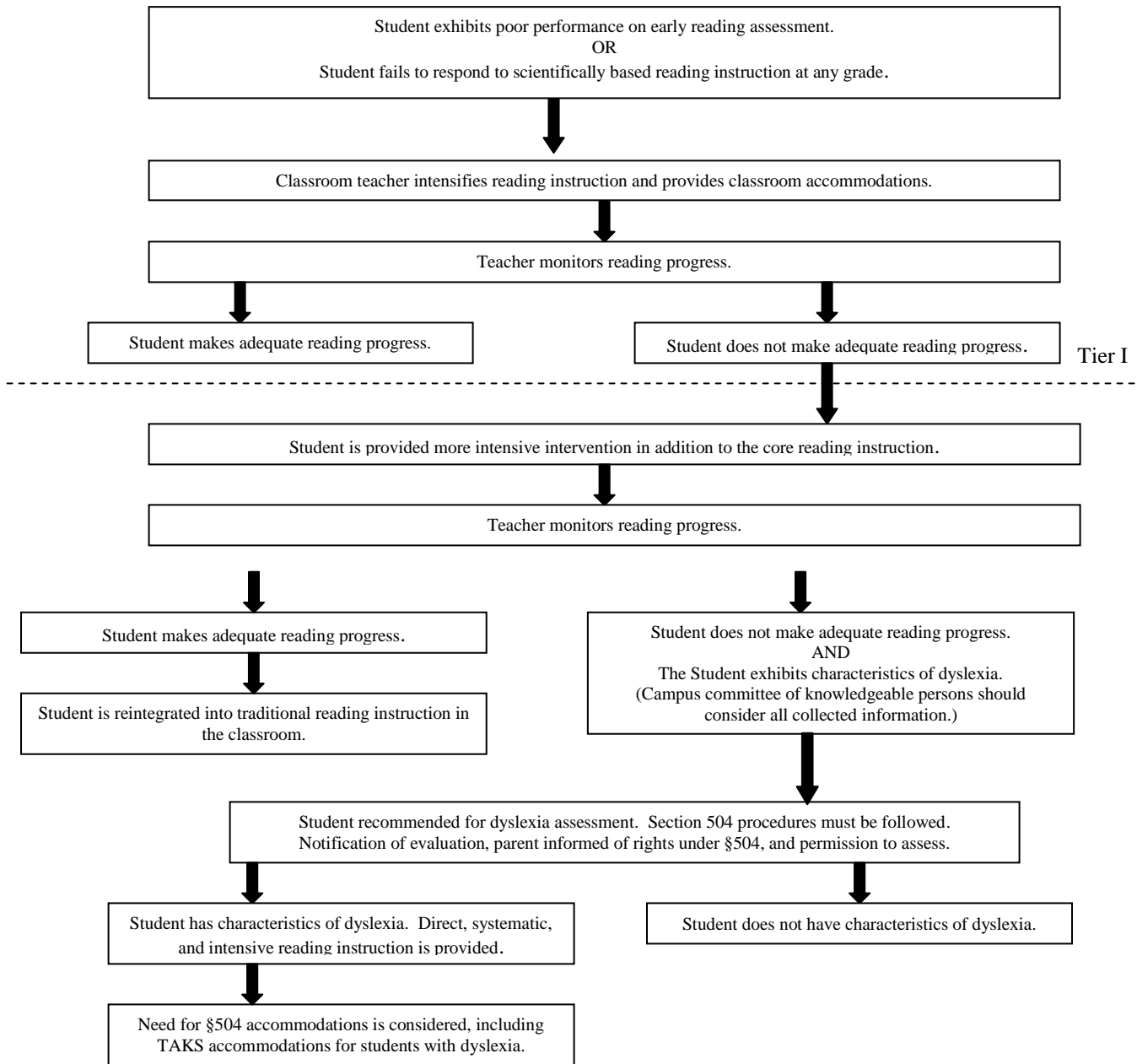
No one factor is sufficient to warrant exiting a student from direct Dyslexia services. Dismissal is determined by consensus of the committee of knowledgeable persons. The committee considers the following factors when recommending exiting or reduction of dyslexic services:

- Completion of the district dyslexia program;
- The reevaluation and/or post-testing of student shows student growth to be closer to grade level proficiency standards;
- The student demonstrates self-monitoring/self-correction behaviors as evidenced through informal observation by teacher and/or dyslexia teacher;
- The student passed the reading portion of the state assessment;
- Committee recommendation;
- Parents request in writing that the student exit the program.

If a student has shown substantial progress and the committee of knowledgeable persons determines the student is ready to be dismissed completely from the program, the committee may recommend monitoring services instead of direct services. When a child is exited from the dyslexia program, a dismissal form will be completed and placed in the child's cumulative folder.

## Appendix A: Pathway to the Identification and Provision of Instruction for Students with Dyslexia.

This flow chart illustrates in process for determining the instructional support needed by students with dyslexia.



### Tier II

Special Education evaluation should be conducted whenever it appears to be appropriate. Some students will NOT proceed through all steps before being referred for a Full Individual Evaluation (FIE). A dyslexia evaluation may be incorporated into the FIE completed through special education.

1. Parents (or guardians) of students in K-2 will be notified if the student is determined to be at risk for dyslexia or other reading difficulties (TEC §28.006).
2. Parents (or guardians) may request dyslexia assessment or special education evaluation at any time.